
TECHNICAL MANUAL

**Plastic Laminated Diagrams For
Direct Support and General Support Maintenance Manual**

**SEARCHLIGHTS, INFRARED
AN/GSS-14(V)1 (NSN 5855-00-137-7697)
AN/GSS-14(V)2 (NSN 5855-00-137-7698)
AN/VSS-1(V)1 (NSN 5855-00-137-7696)
AN/VSS-1(V)2 (NSN 5855-00-137-8289)**

NOTICE TO USERS

This package contains 9 diagrams from TM 11-5855-250-34&P that have been plastic laminated for use in the maintenance of Searchlight, Infrared AN/GSS-14(V)1 and 2 and AN/VSS-1(V)1 and 2.

You can submit comments on the usability of the diagrams by using DA Form 2028 (Recommended Changes to Publications and Blank Forms). Send to Commander, US Army Communications-Electronics Command, DRSEL-ME-MQ, Fort Monmouth, NJ 07703.

CONTENTS

Figure 2-5. Converter Assembly Model 9912 or F 50001, Schematic Diagram.
Figure 2-7. Converter Assembly Model 6484, Schematic Diagram.
Figure 2-10. Converter Assembly Model 9924, Schematic Diagram.
Figure 2-11.1. Converter Assembly Model 9948, Schematic Diagram.
Figure 2-11.2. Converter Assembly Model 9948, Schematic Diagram.
FO-2. AN/VSS-1 (V) Using Relay Panel Assembly SC-D613960.
FO-4. AN/VSS-1 (V) Using Relay Panel Assembly SC-D613960, Wiring Diagram.
FO-6. AN/VSS-1 (V) Using Relay Assembly 9913, Schematic Diagram.
FO-9. AN/GSS-14 (V) Schematic Diagram.

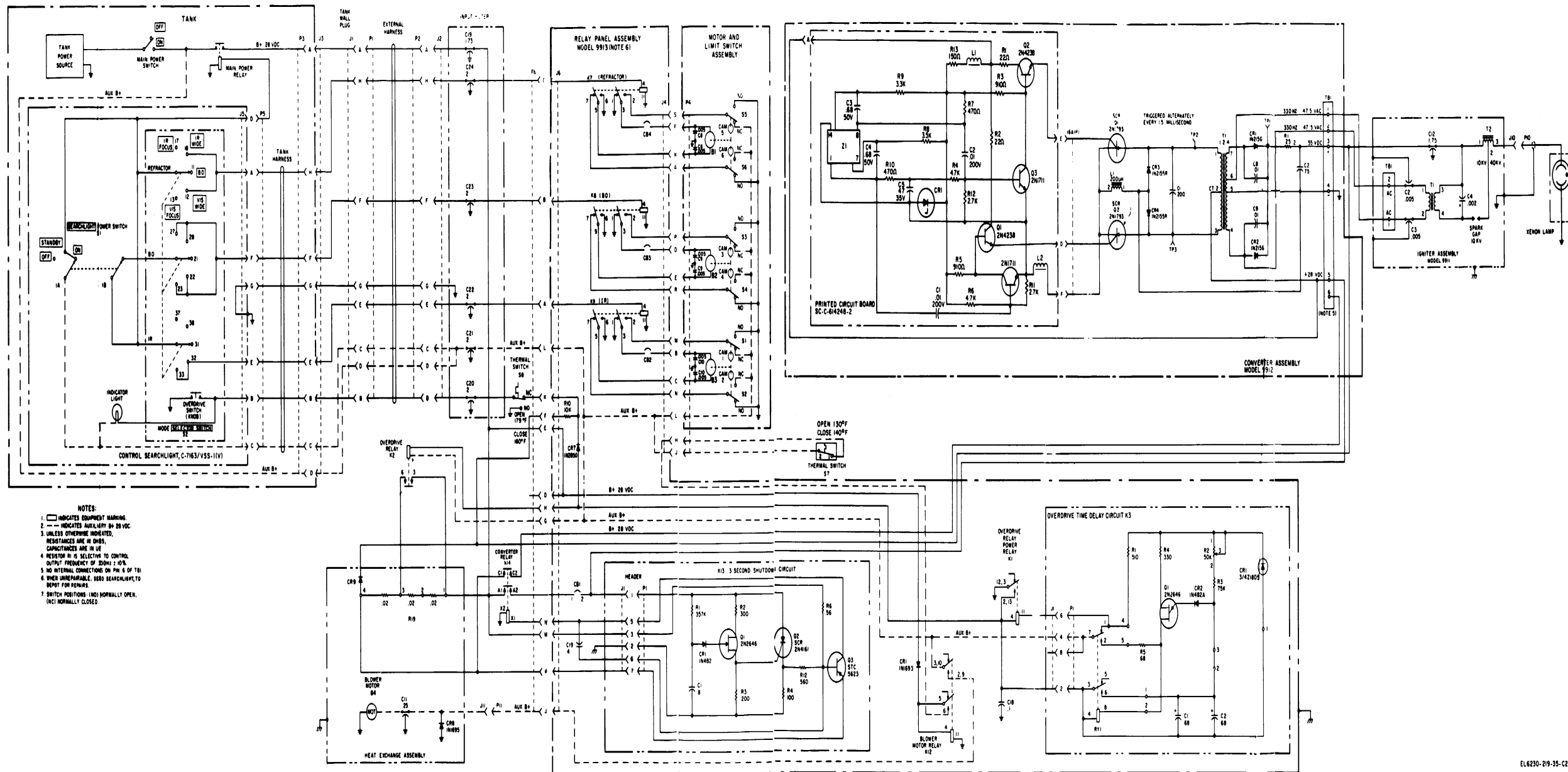
By Order of the Secretary of the Army:

Official:

ROBERT M. JOYCE
Brigadier General, United States Army
The Adjutant General

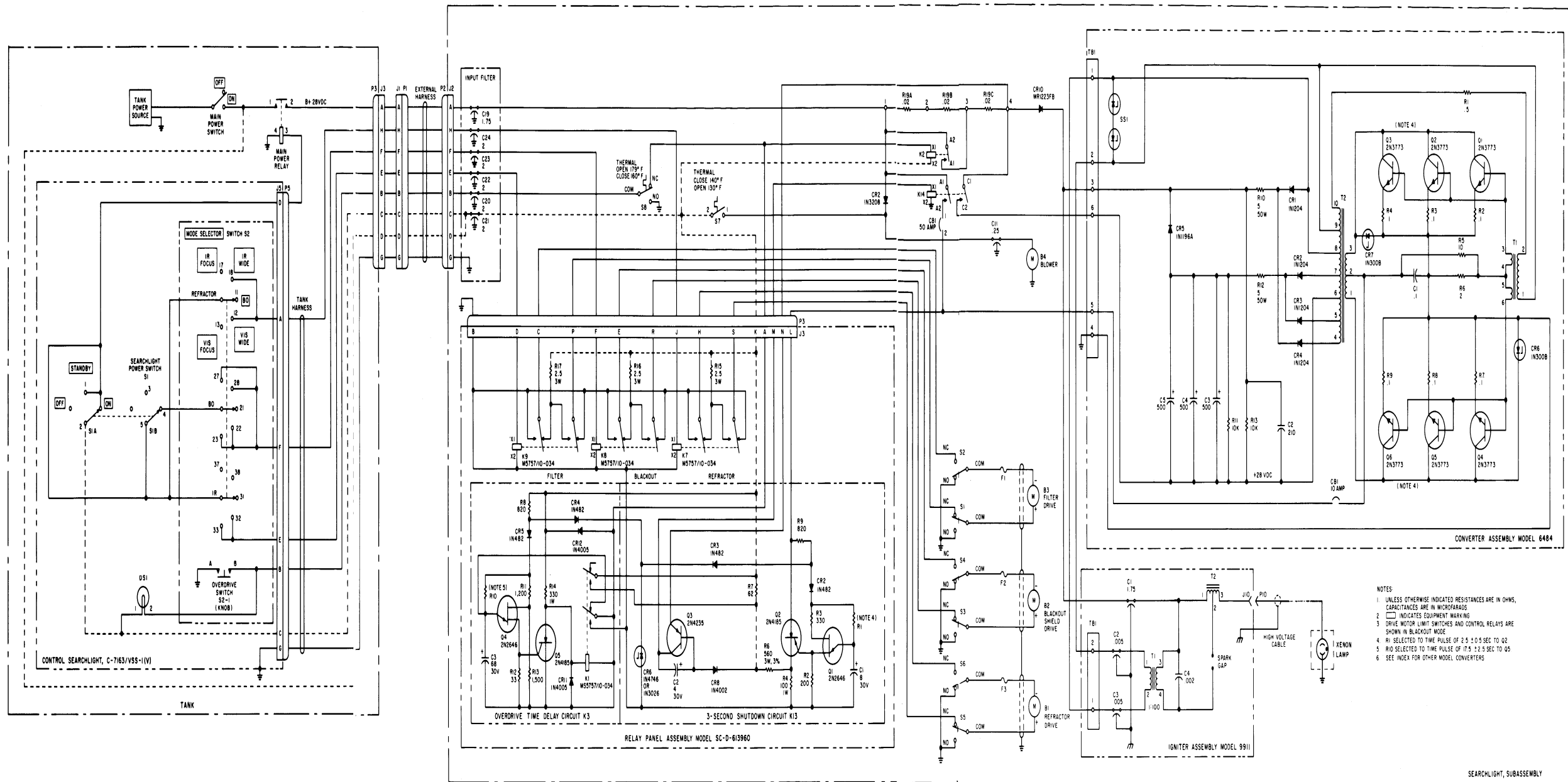
E. C. MEYER
General, United States Army
Chief of Staff

Distribution: Special List



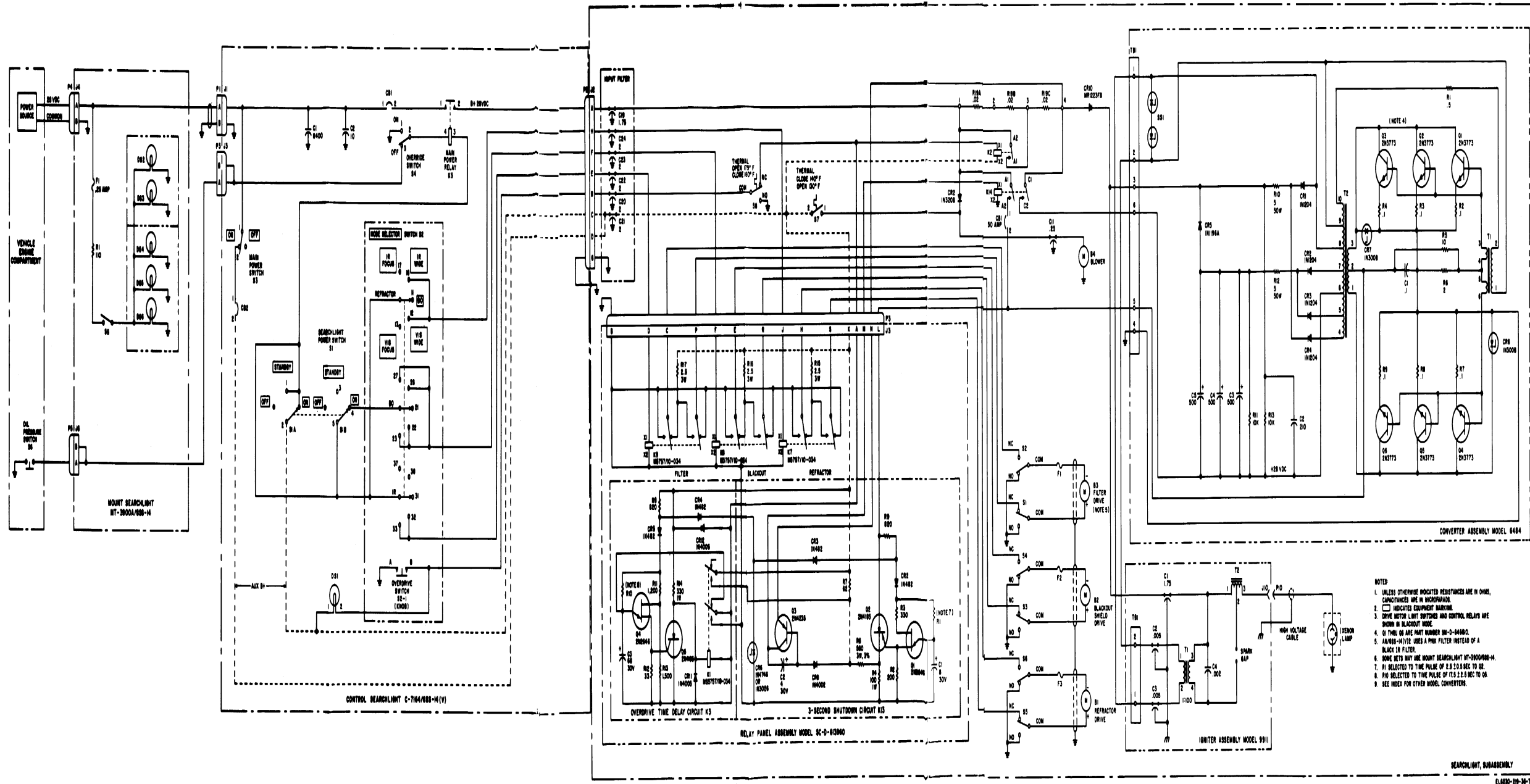
- NOTES:
1. INDICATES EQUIPMENT MARKING.
 2. INDICATES AUXILIARY BY 28 VDC.
 3. UNLESS OTHERWISE INDICATED, RESISTANCES ARE IN OHMS, CAPACITANCES ARE IN UF.
 4. RESISTOR R1 IS SELECTIVE TO CONTROL OUTPUT FREQUENCY OF 800Hz ± 10%.
 5. NO INTERNAL CONNECTIONS ON PIN 6 OF T81.
 6. WHEN UNREPAIRABLE, SEND SEARCHLIGHT TO DEPOT FOR REPAIR.
 7. SWITCH POSITIONS: (NO) NORMALLY OPEN, (NC) NORMALLY CLOSED.

FO-2. AN/VSS-1(V) using relay panel assembly SC-D-613960..

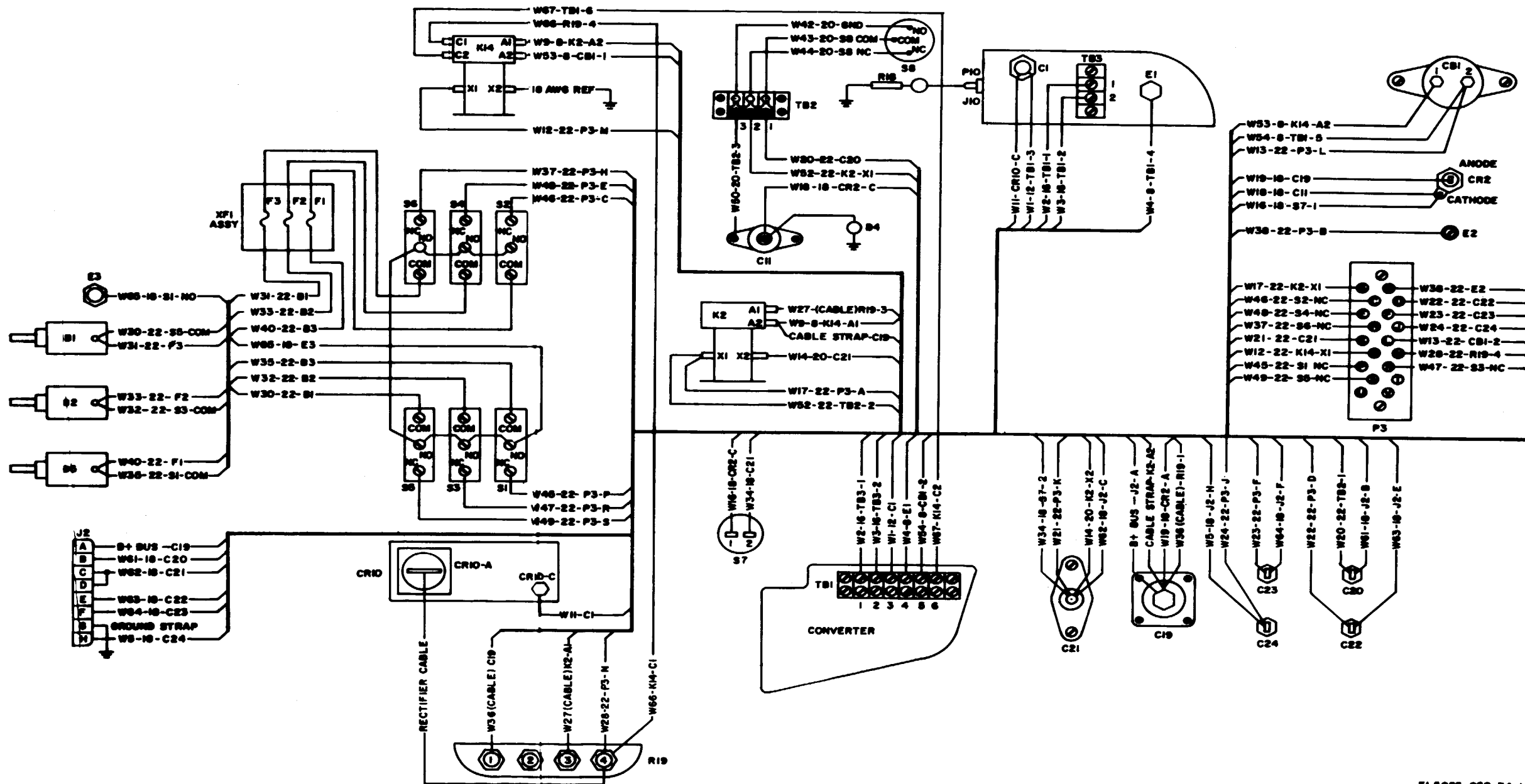


- NOTES
- 1 UNLESS OTHERWISE INDICATED RESISTANCES ARE IN OHMS, CAPACITANCES ARE IN MICROFARADS
 - 2 INDICATES EQUIPMENT MARKING
 - 3 DRIVE MOTOR LIMIT SWITCHES AND CONTROL RELAYS ARE SHOWN IN BLACKOUT MODE
 - 4 R1 SELECTED TO TIME PULSE OF 2.5 ± 0.5 SEC TO Q2
 - 5 R10 SELECTED TO TIME PULSE OF 17.5 ± 2.5 SEC TO Q3
 - 6 SEE INDEX FOR OTHER MODEL CONVERTERS

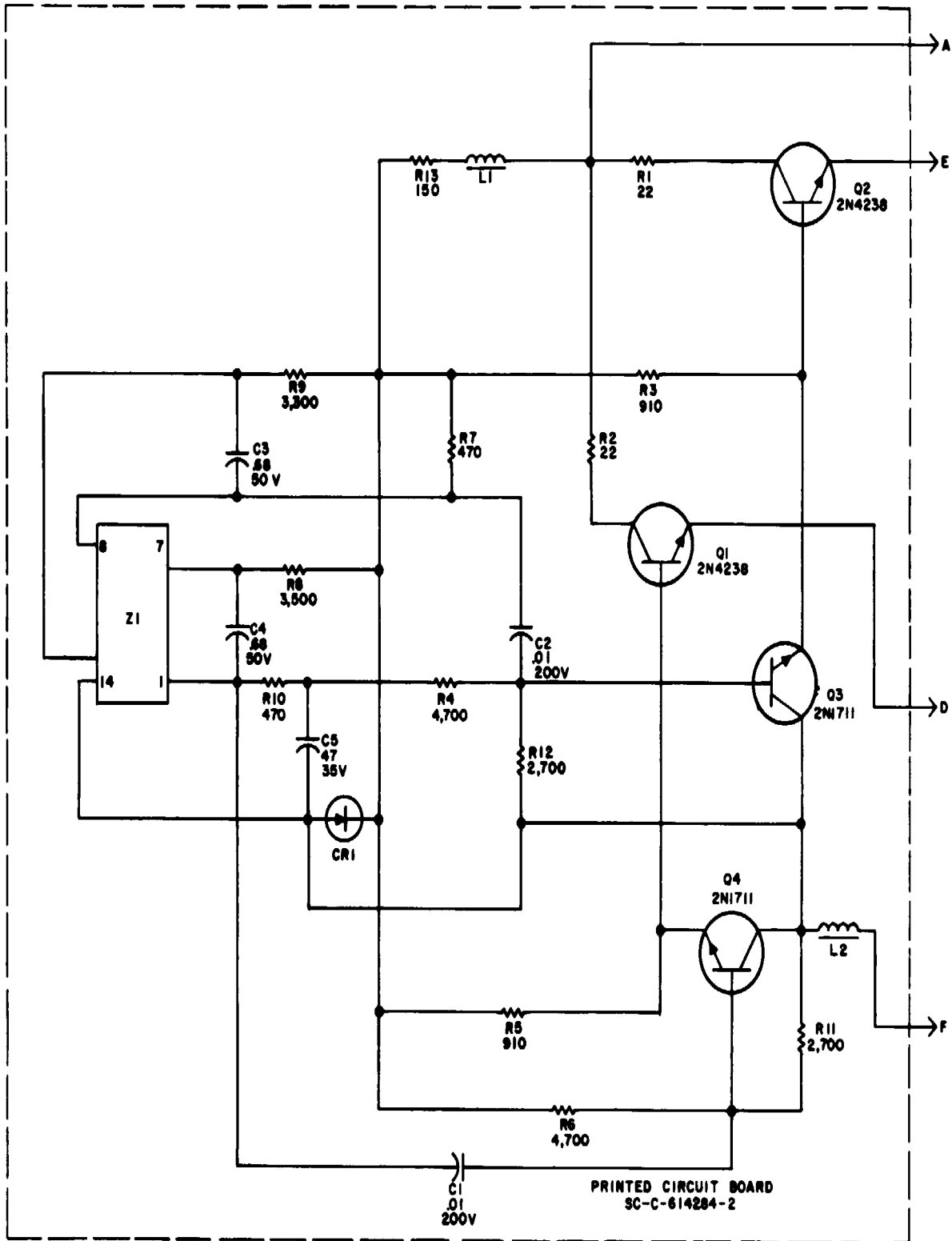
FO-4. AN/VSS-1 (V) using relay panel assembly SC-D-613960, wiring diagram.



FO-9. AN/GSS-14(V), schematic diagram.



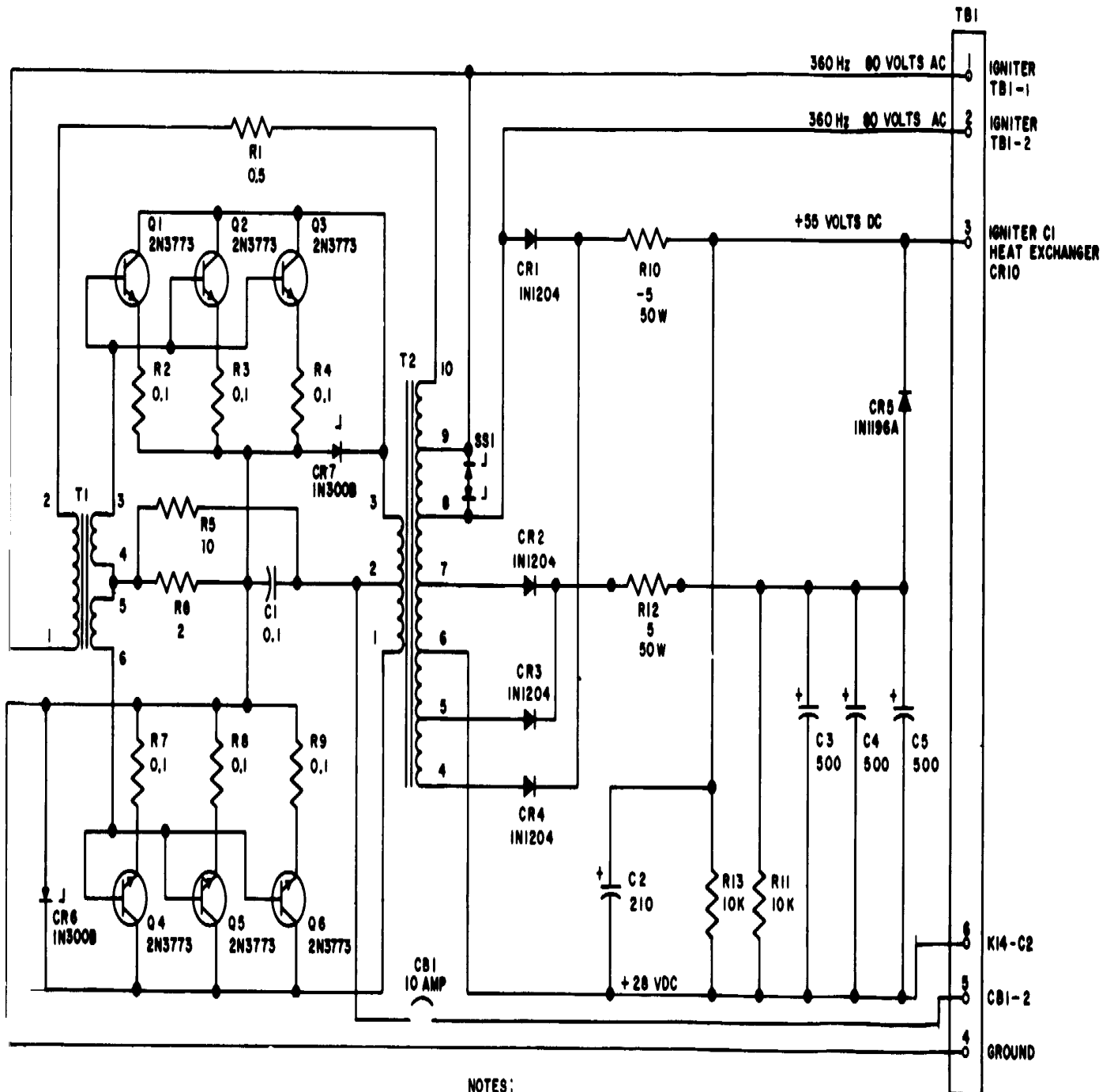
FO-6. AN/VSS-1 (V) using relay panel assembly 9913, schematic diagram.



NOTE:
UNLESS OTHERWISE INDICATED RESISTANCES ARE IN OHMS,
CAPACITANCES ARE IN MICROFARADS.

EL2QY001

Figure 2-5. Converter assembly model 9912 or F500001, schematic diagram



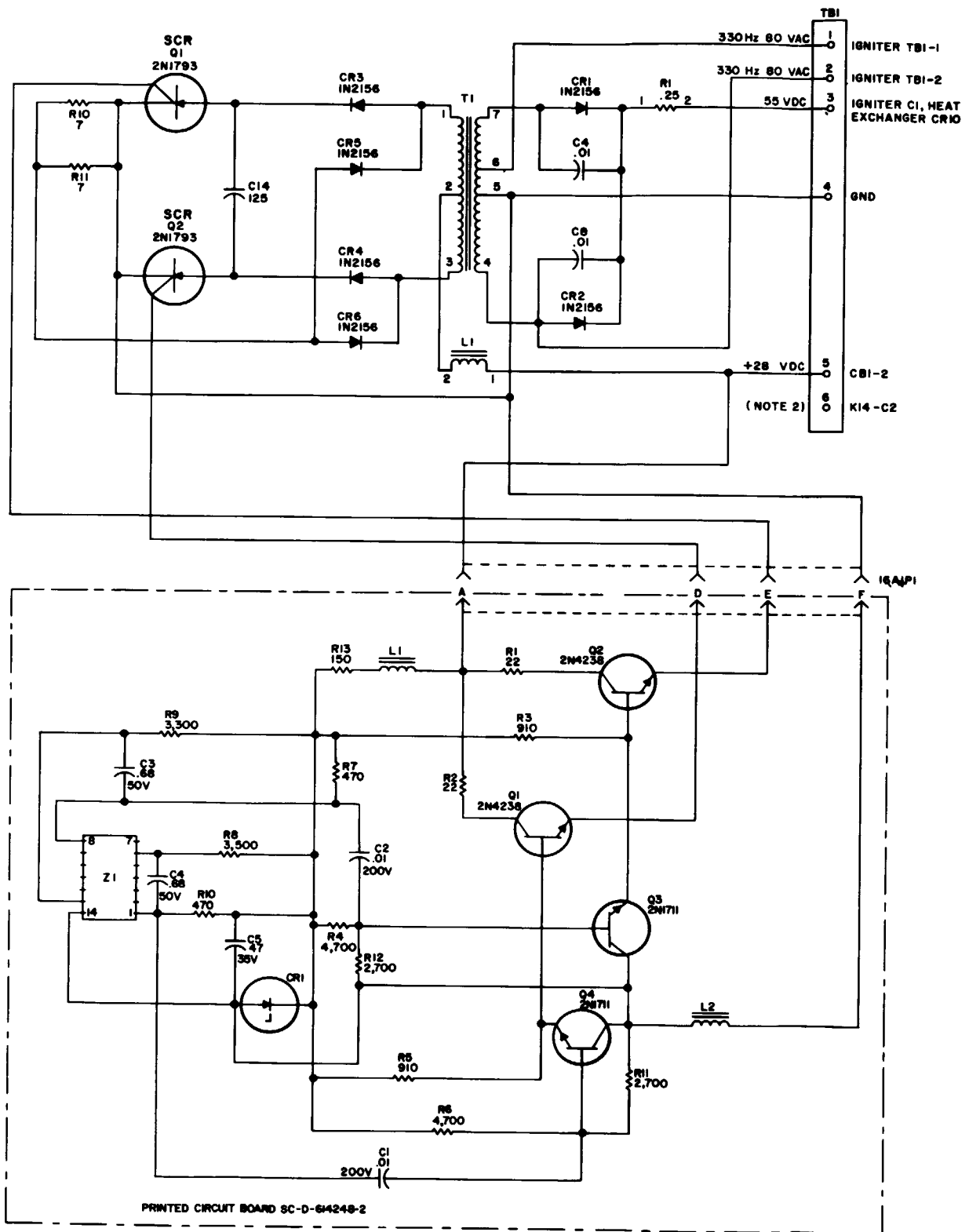
NOTES:

1. UNLESS OTHERWISE SPECIFIED:
ALL RESISTANCE VALUES ARE IN OHMS $\pm 1\%$, 25 W, WIREWOUND.
2. ALL CAPACITANCE VALUES ARE IN MICROFARADS $+50\%$, $50V$
 -10%

3. Q1 THRU Q6 ARE PART NUMBER SM-D-646610

EL6230-219-35-C2-84

Figure 2-7. Converter assembly model 6484, schematic diagram..



NOTES:
 1. UNLESS OTHERWISE INDICATED ALL RESISTOR VALUES ARE IN OHMS, ALL CAPACITOR VALUES ARE IN MICROFARADS.

2. NO INTERNAL CONNECTIONS ON PIN 6 OF TBI.

EL6230-219-35-C2-TM-70

Figure 2-10. Converter assembly model 9912 or F50001, schematic diagram.

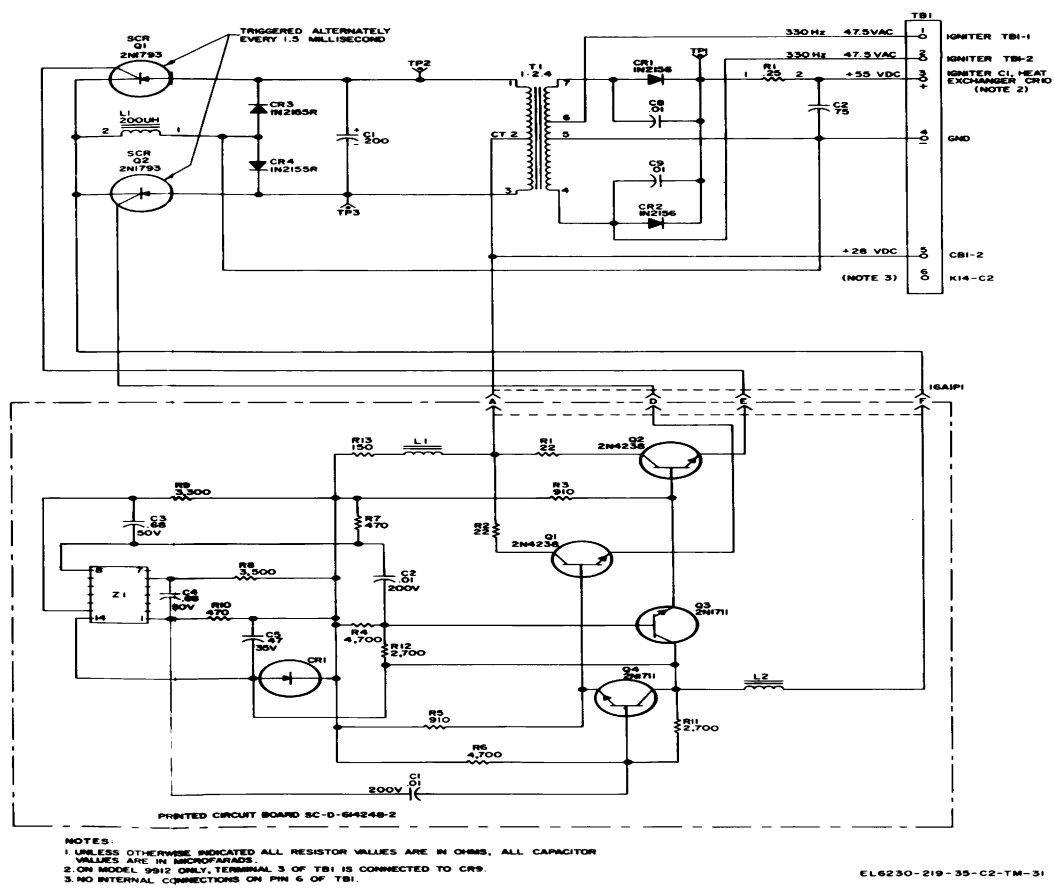


Figure 2-11.2 Converter assembly model 9948, schematic diagram.

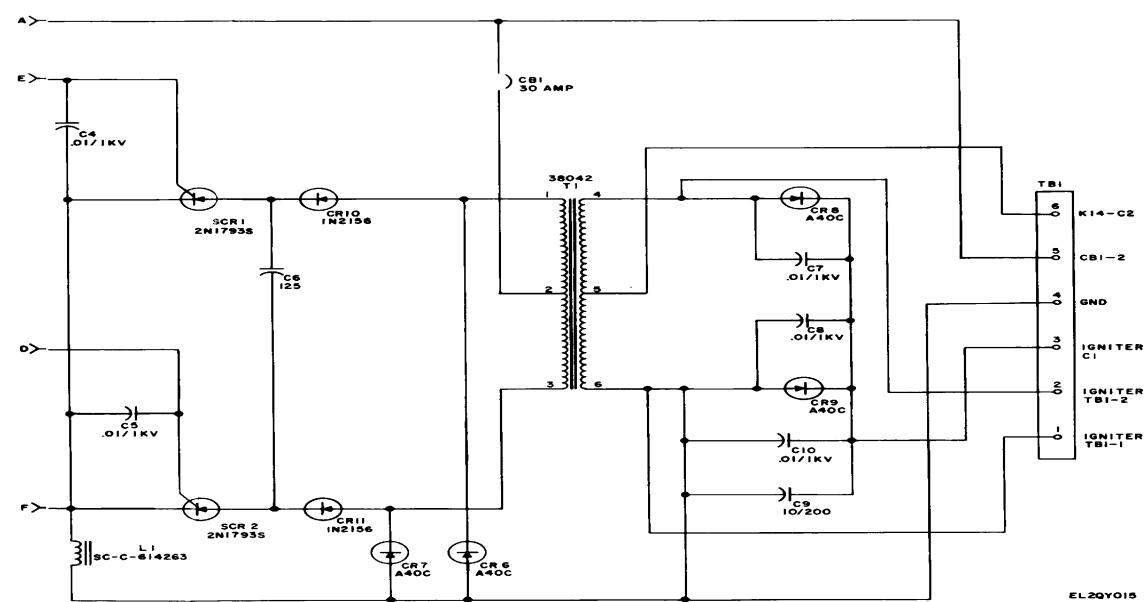


Figure 2-11.1 Converter assembly model 9948, schematic diagram.

RECOMMENDED CHANGES TO EQUIPMENT TECHNICAL PUBLICATIONS

SOMETHING WRONG WITH THIS PUBLICATION?



THEN... JOT DOWN THE DOPE ABOUT IT ON THIS FORM, CAREFULLY TEAR IT OUT, FOLD IT AND DROP IT IN THE MAIL!

FROM: (PRINT YOUR UNIT'S COMPLETE ADDRESS)

DATE SENT

PUBLICATION NUMBER

PUBLICATION DATE

PUBLICATION TITLE

BE EXACT... PIN-POINT WHERE IT IS

IN THIS SPACE TELL WHAT IS WRONG AND WHAT SHOULD BE DONE ABOUT IT:

PAGE NO.

PARA-GRAPH

FIGURE NO.

TABLE NO.

TEAR ALONG PERFORATED LINE

PRINTED NAME, GRADE OR TITLE, AND TELEPHONE NUMBER

SIGN HERE:

DA FORM 2028-2 JUL 79

PREVIOUS EDITIONS ARE OBSOLETE.

P.S.—IF YOUR OUTFIT WANTS TO KNOW ABOUT YOUR RECOMMENDATION MAKE A CARBON COPY OF THIS AND GIVE IT TO YOUR HEADQUARTERS.

